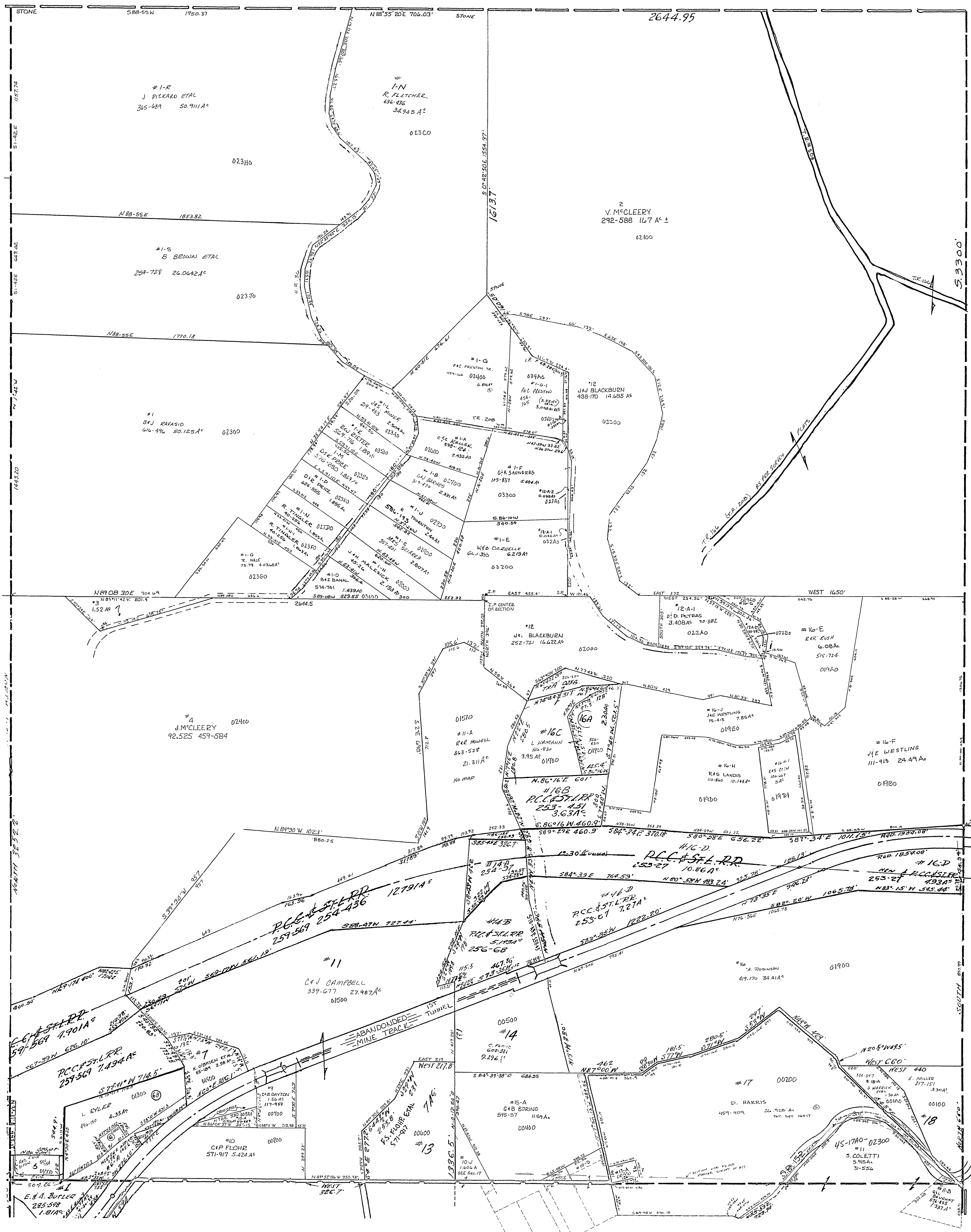


45-1800-



#17-A D.C. HARRIS .349A 466-191
 #16-G J.E. WESTLING 0.396A 111-913
 #6 L. EYLER ETAL 0.24A 491-150
 #12-A2 G.A. SANDERS 0.098A 195-837
 #16-I-A J.M. BLACKBURN .232A 329-167

127
 18

WAYNE TWP.
 SEC. 18, T. 9, R. 3.
 SCALE: 1" = 200'